

- Company Overview

MarTech

HISTORY

MarTech started in 1993 and has grown to be one of the largest specialized industrial service companies in Northern California. Today MarTech has the experience and expertise needed to perform all of your facilities service requirements. From daily maintenance support, full plant turnarounds, equipment repair and emergency call out response for all services, MarTech is ready to support your plant.

■ INDUSTRIES SERVED

- Power Generation
 - Hydro
 - Biomass
 - Combined Cycle
 - Geothermal
- Manufacturing
 - Paper
 - Lumber
 - Drywall & Gypsum
 - Food & Wine
- Utilities
- Elevator – Motor & Gearing
- Surface Mines

■ CUSTOMER BASE

- PG&E
- CCWD
- EBMUD
- Stockton East Water Dist.
- City of Oakland
- City of Roseville
- City of San Jose
- City of Stockton
- City of Sacramento
- Modesto Irrigation Dist.
- Turlock Irrigation Dist.
- Oakdale Irrigation Dist.
- El Dorado Irrigation Dist.
- Air Products
- Air Gas
- Linde Air
- UC Davis Med Center
- Cal Paper
- Sierra Pacific
- Georgia Pacific
- ETHOS Energy
- CalPine Energy
- PRO Energy
- DTE Energy
- U.S. Coast guard
- Granite
- Teichert

■ COMPANY CAPABILITIES

- Mechanical & Electrical Analysis & Repair
- Machine Work & Welding Shop & Field
- Electrical Maintenance & Repair Shop & Field
- Turn-Key Projects (Self Perform)
- Supplemental Man Power
- Technical & Analytical Services
- Health & Safety (Confined Space & Rescue)
- Computerized “Cloud Data basing” – Maintained “in-house”
- Full Time Health & Safety Coordinator
- Blasting & Coatings
- Contractor License # C10 - C61 - D21 - B - A

MACHINING – CAPABILITIES

Shop & Field

■ CAPABILITIES

- CNC & Manual Machining
- VTL
- Mill
- Lathe
- Balancing – (Hard / Soft Bearing)

■ EXAMPLES

- WKM Valve – Bore Weld / Line Bore
- Finished Piston
- Oil Pump Gear-Set
- CNC Trunnion Support



- PG&E - TSV ACTUATORS
 - Machining / Removal



- Machining Old Liners



- Finished Bore

- PG&E - *TSV ACTUATORS*
 - *PISTON MACHINING*



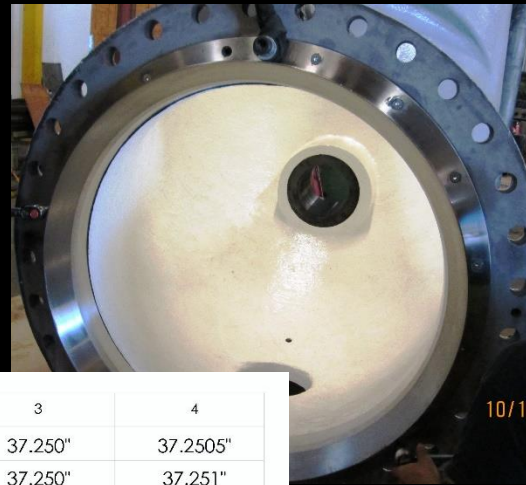
• Raw Material



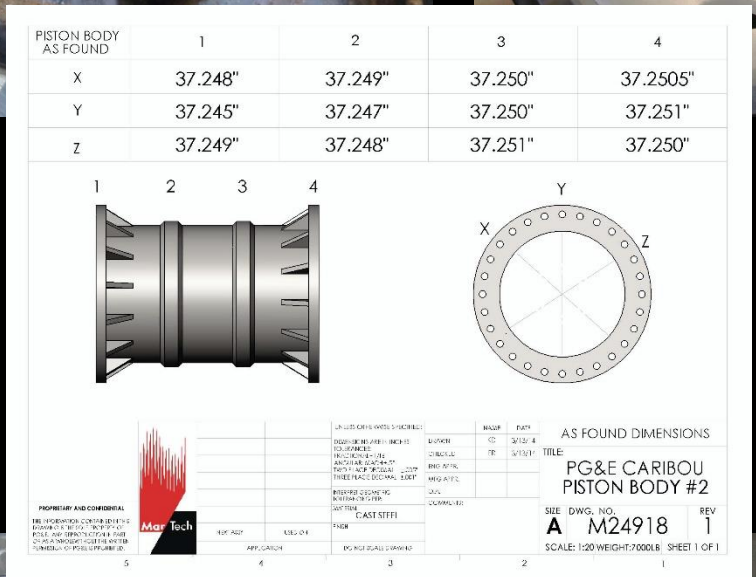
• "Roughed-Out" Piston



• Finished Dimension



10/1



PG&E – PISTON BODY / PRV

Fully Refurbished Actuator

- Removal
- Tear Down & Inspect
- As Found Dimensioned Drawing



10/12/2014

■ PELTON WHEEL REPAIR



• Grinding



• Filler



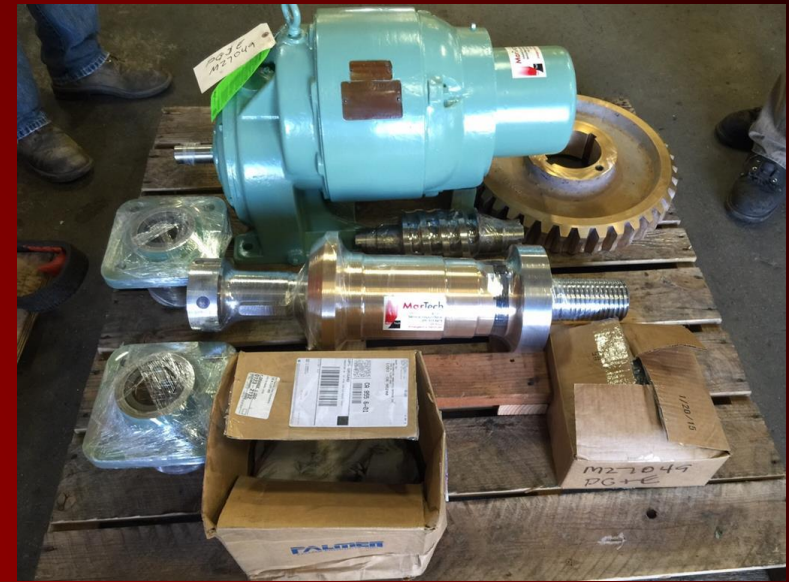
• Re-profiling



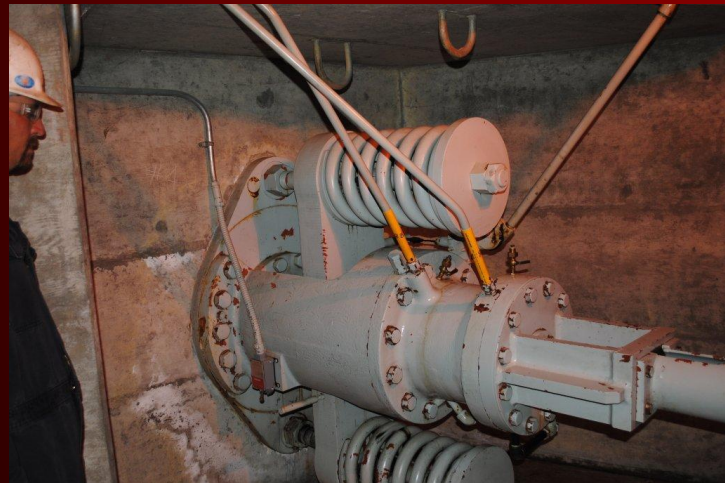
- OEM ASSEMBLIES REPAIR & REPLACE



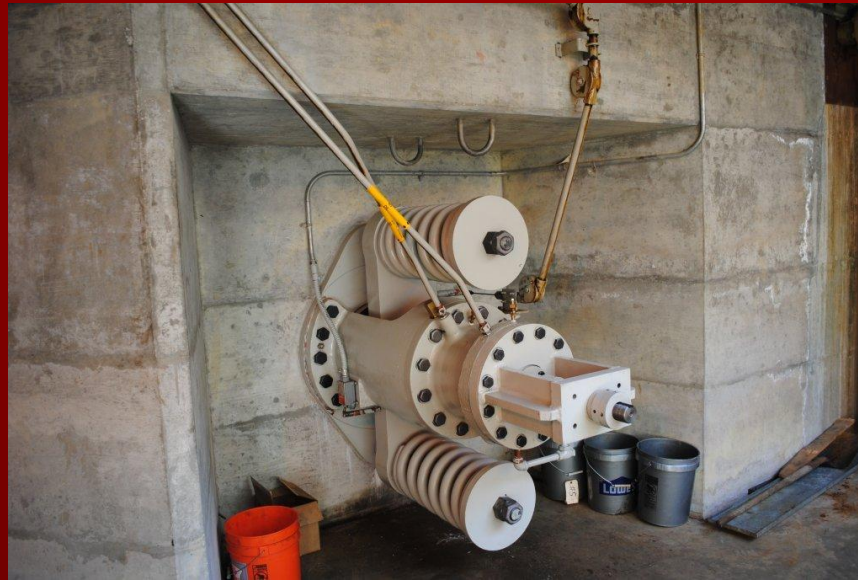
- Needle Assembly



- Hydro Controller



- Drum "As Found"



- Drum "As Repaired"



- Drum Turbine



■ CNC MACHINING

- Prototyping
- Reverse engineering
- Sand & Media Blasting
- Specialized Coatings

MOBILE MACHINE & WELDING

CLIMAX - Mobile Equipment

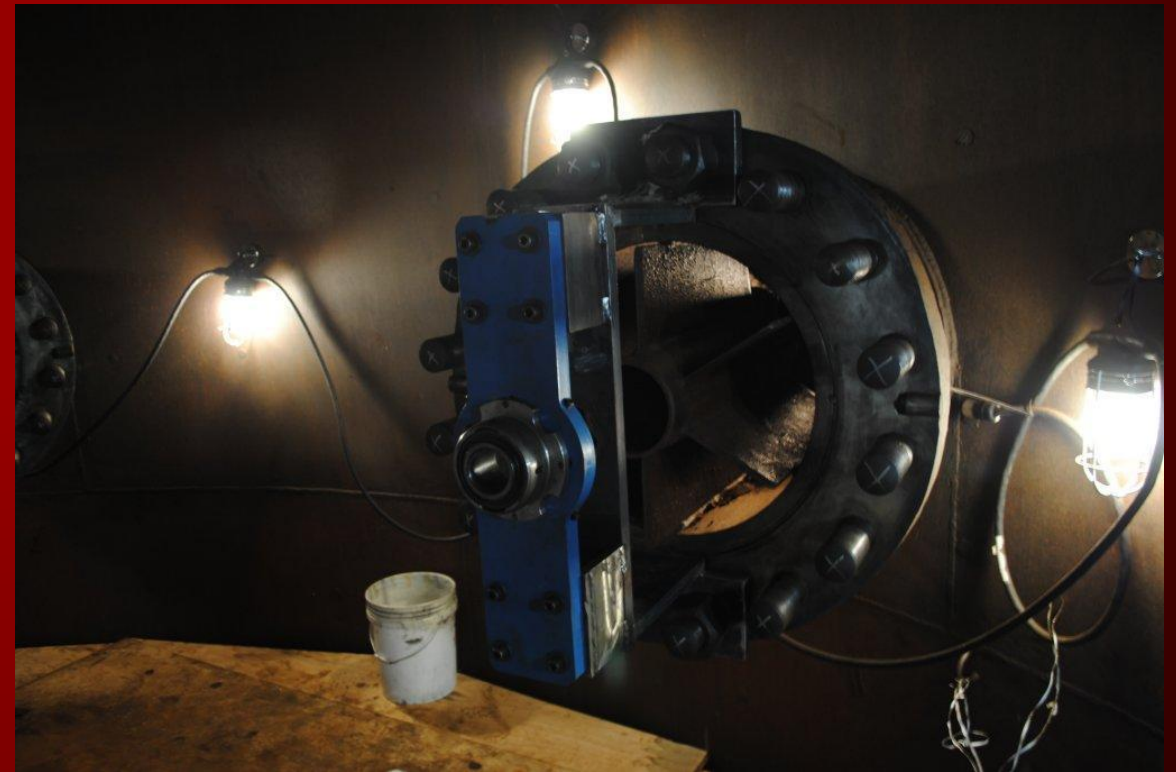
- Lathe / Journal Squirrel
- Line Boring
- Key Mill
- Flange Facer
- Bore Welder



UC Davis Elevator – Journal Repair

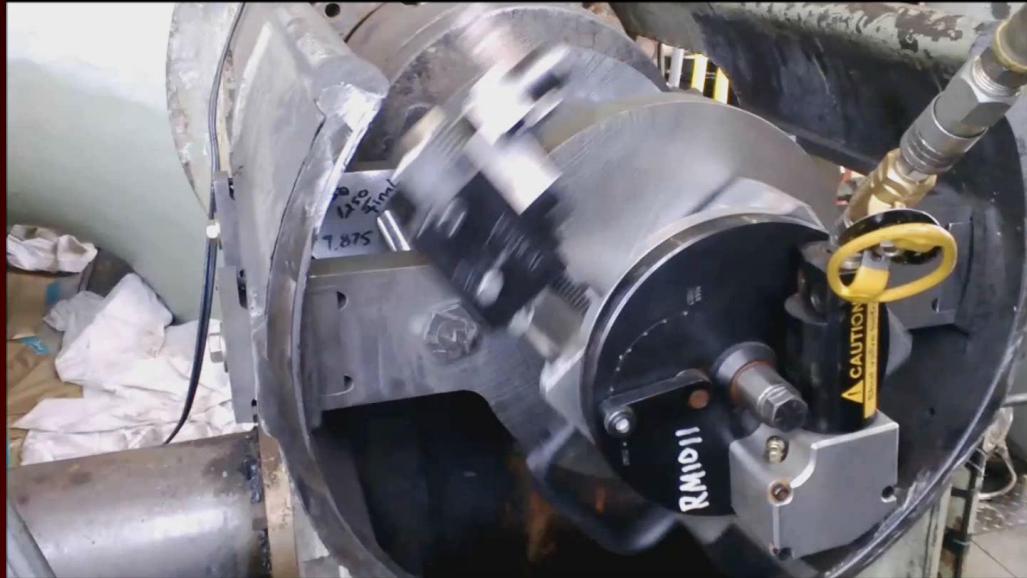


• PG&E – Boring Needle Shaft Bushings



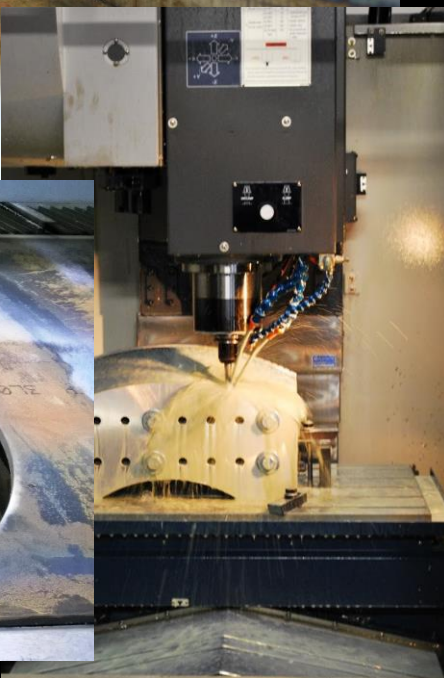
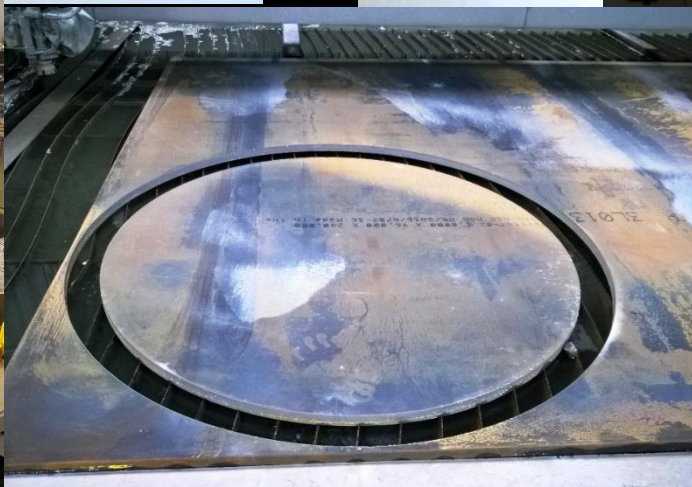
• PG&E – Boring Needle Shaft Bushings

- Mobile Machining



• FLANGE FACER – HOUSING REPAIR





CNC - CAPABILITY / CAPACITY

Water Jetting

- 13'W x 10'L x 6"W
- Minimal Kerf
- No Heat Affected Zone

Plasma Cutting

- 10'W x 5'L x 3/4"W

CNC Milling

- 22" x 44"
- 5 Axis

Welding – Semi Automatic

- Rotary Positioning Table
- Buggo Automated Welder
- Climax Bore Welder



- *BALANCING - SHOP*
 - ENTEK – Soft Bearing
 - Smaller capacity Rotors etc
 - SCHENCK – Hard Bearing
 - Large / High Speed

FIELD SERVICE - MILLWRIGHT

Shop Mechanical – Maintenance & Repair

■ PG&E - HAT CREEK

- New 7" Nut
- Re-Machine all Wear Parts
- Blasted & Epoxy Coated
- Reassembled
- Delivered
- Installed
- Commissioned





• CRANE SERVICES

Self Perform - Capacity

- 28 Ton
- 106' of Stick

Sub Contracted – Capacity

- 750 Ton



ANALYTICAL

MECHANICAL & ELECTRICAL



■ RELIABILITY - NDT / NDE

• Vibration Analysis

- Routes
- R.C.A. / R.C.F.A

• Ultrasound & Ultrasonic

- Airborne & Contact
- Thickness & Flaw Detection

• On / Off -Line Motor Circuit Analysis

- Rotating Equip. Electrical Condition

• Infrared Thermography

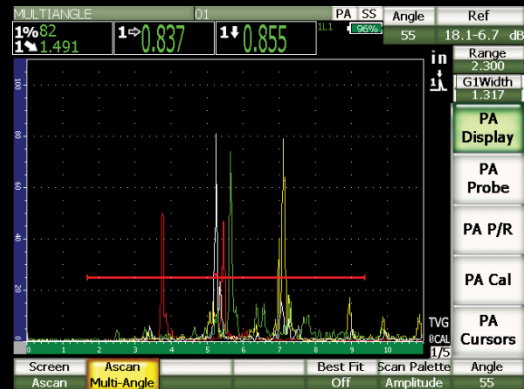
- Switchgear Inspections
- Water Intrusion / Moisture

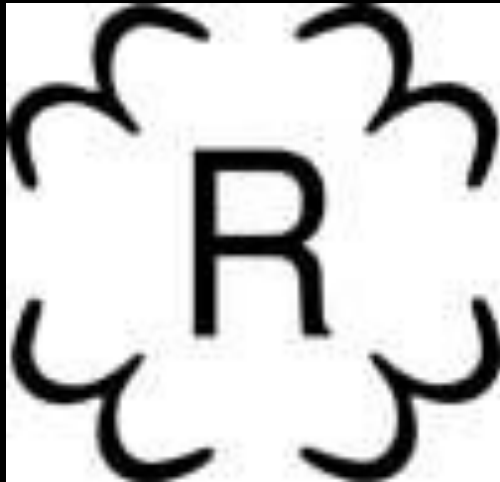
• Oil Lube Analysis – Tribology

- Gearboxes Etc.

• Acceptance Testing

- Pressure Vessels
- Valves





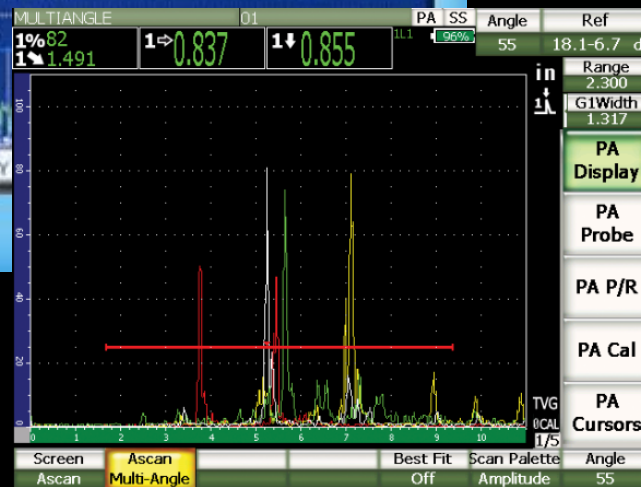
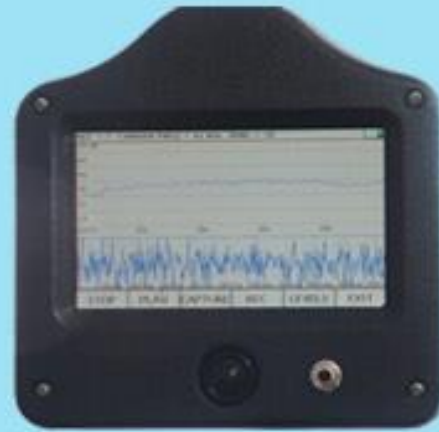
■ ASME / ASNT

■ Credentials / Capabilities

- ASME "R" Stamp Certified pressure Vessel Repair.
 - Material Groups P-1 thru P-15E.
- ASME / ASNT Penetrant Testing (PT) Level II
- ASME Hydrostatic Pressure Testing to 10,000 psi.
- ASME Sec V. UT Inspection & Testing
- ASME Mag Particle Testing (MT)

■ Meters & Equipment

- PMI (Positive Material Identification) NITON XL2 GLD
- Olympus EPOCH 1000 R UT testing device
- Hardness Tester

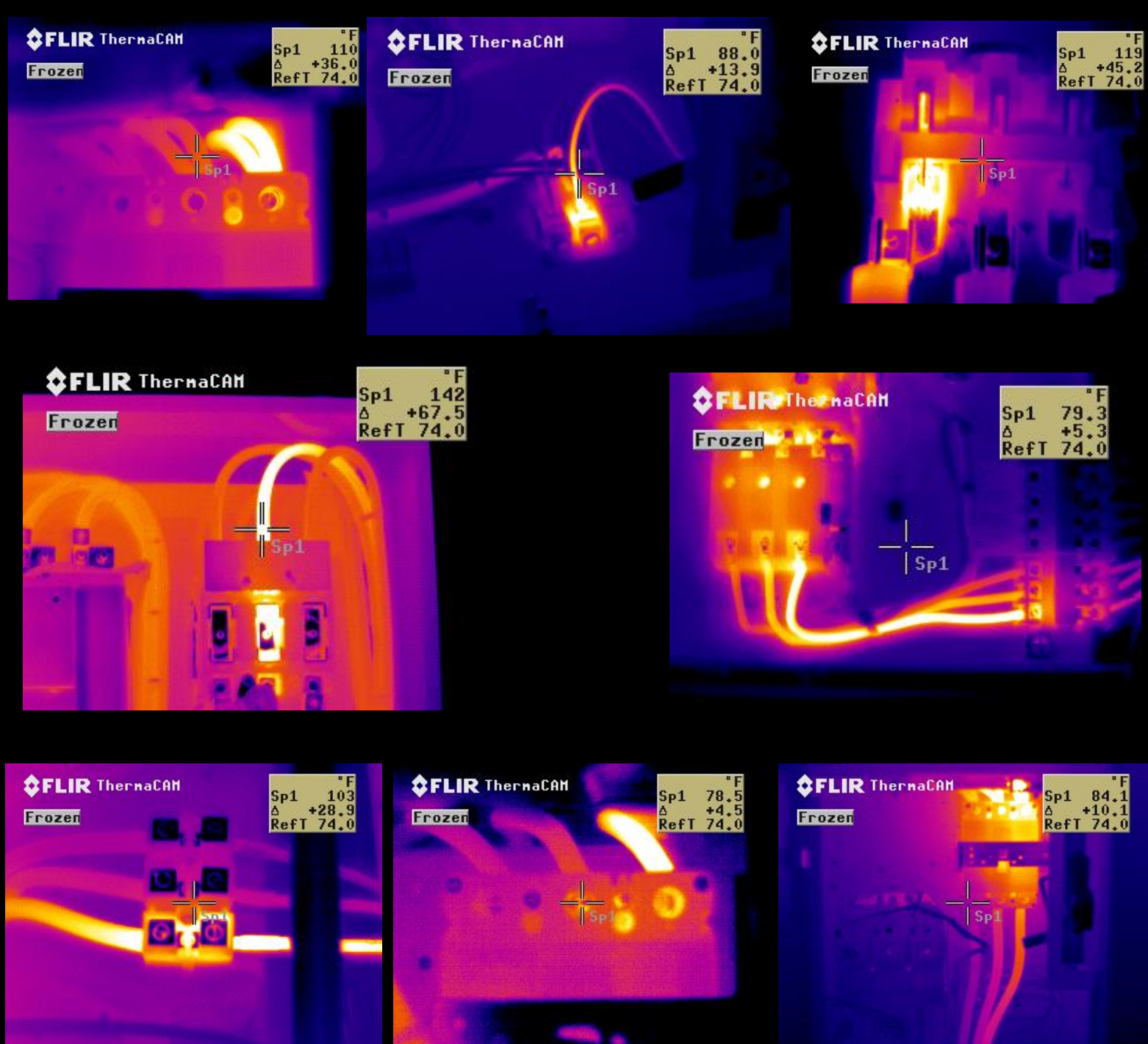


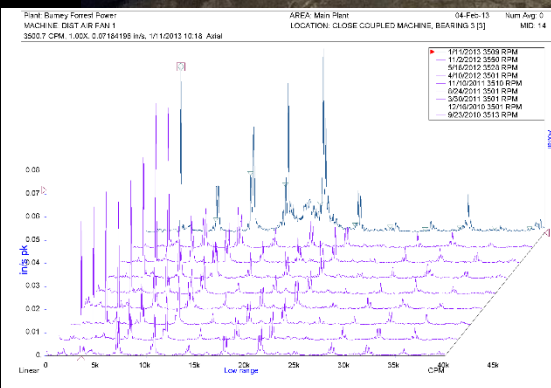
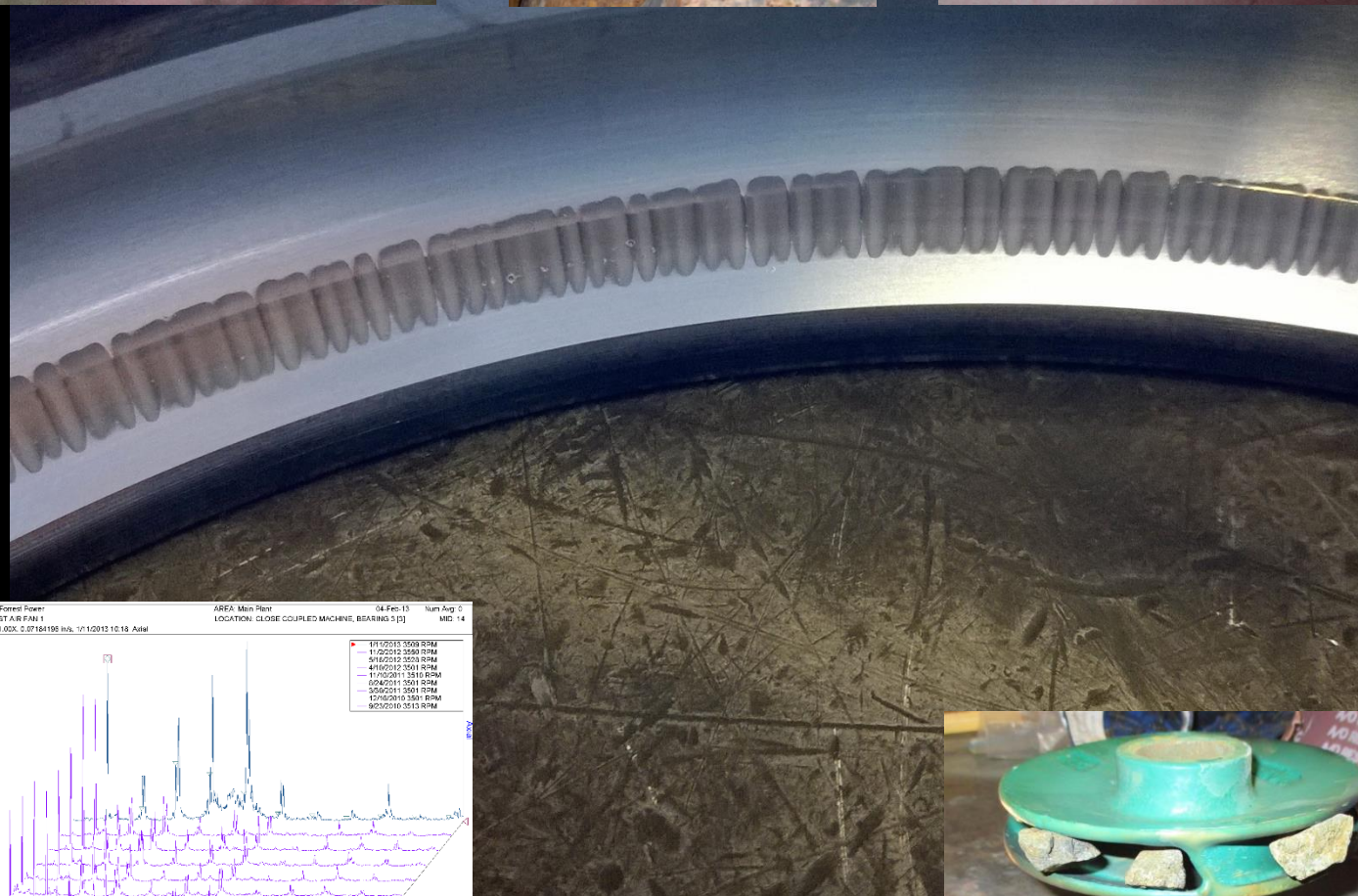
■ ULTRASOUND & ULTRASONIC

- Airborne & Contact
- Lubrication
- Leak Detection
- Valve Inspection
- Steam Trap
- Electrical Inspection
- Mechanical Inspection

■ INFRARED

- Thermography
 - Switchgear Inspection
 - Electrical Connections
 - Water intrusion / Moisture
 - Steam Traps
 - Refractory





■ RCFA - ROOT CAUSE FAILURE ANALYSIS

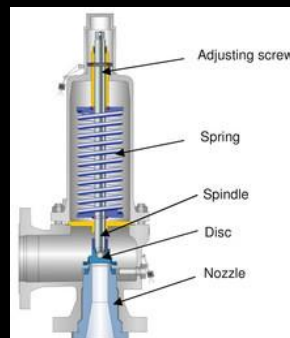
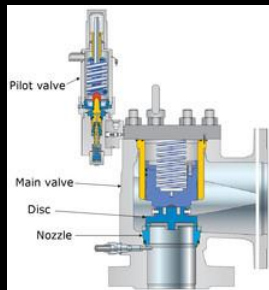
-MECHANICAL & ELECTRICAL

- Premature Bearing Failures
- Gear-Box / Gear-Set
- On-going / re-occurring issues
- Lubrication Audits

VALVES

Maintenance, Repair and Sales

- MarTech repairs and maintain all types of Valves. With vast Experience in numerous industries including power, chemical, Hydro, food process, oil and gas.



- MarTech is a “VR” certified repair facility for Pressure Relief Valves. ASME and NBIC audits performed by the National Board every 3 years.



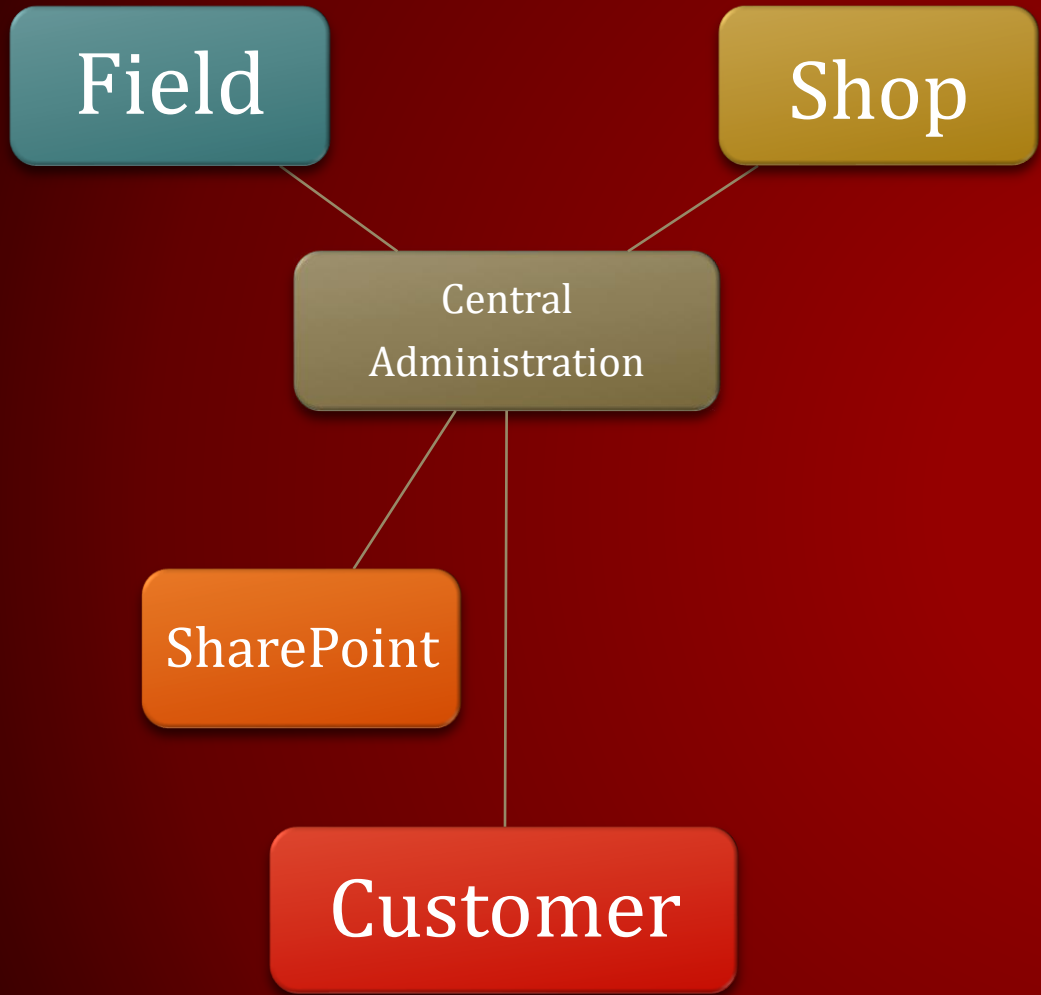
- MarTech is an Authorized Repair Center (LARC) for Leser Safety Valves. LESER is the largest manufacturer of Pressure Relief Valves in Europe.



■ VALVE

MAINTENANCE, REPAIR, SALES

- We offer:
- PM's, full inspection
- Qualified/ Certified test and repair of your existing valves in our shop or in the field.
- Troubleshooting and testing for the field or in shop
- Planning, installation and delivery of new or repaired valves.
- Sales and supply of new valves and spare parts
- Retrofits & Redesigns
- Reverse Engineering

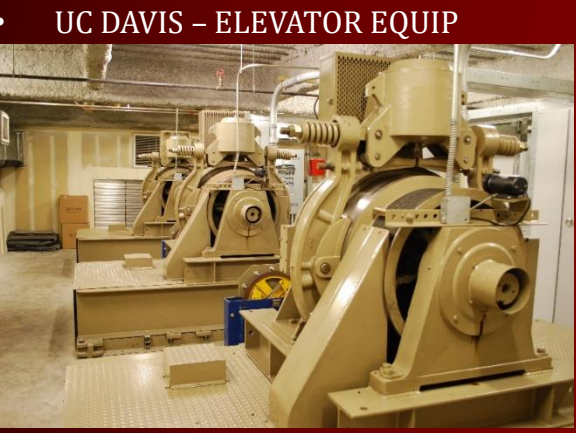


Competitive Advantages

- Active Owner Involvement – (Expedited Decision Making)
- Single Source / Self Perform
- Complete Turn-Key Projects
- Supplemental (Cross trained) Manpower
- In-House Confined Space & Rescue
- Databased Administration
 - In House IT Staff
- Customer Portal Sites
 - Progress (Updates)
 - Online Access
 - Fully Configurable
 - Interactive
- <http://portal.mar-tech.com/SitePages/Home.aspx>



■ IN-DEPTH EXPERIENCE WITH ALL FACETS OF INDUSTRIAL EQUIPMENT



• UC DAVIS – ELEVATOR EQUIP

• US COAST GUARD – GEAR MOTOR R&R

• CCWD – PUMP R&R

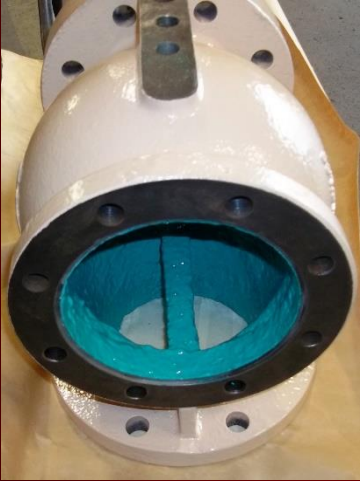
• ELECTRA PACKING CHANGES

• CCWD – PUMP SITE INSTALLS

• T.I.D. GATE & CYLINDER R&R

• Service – installation – Analysis - Repair

SHOP VIEW



SHOP VIEW



SHOP VIEW

